

## sign matt piergiorgio cazzaniga

A highly-comfortable seating of great impact.

materials:

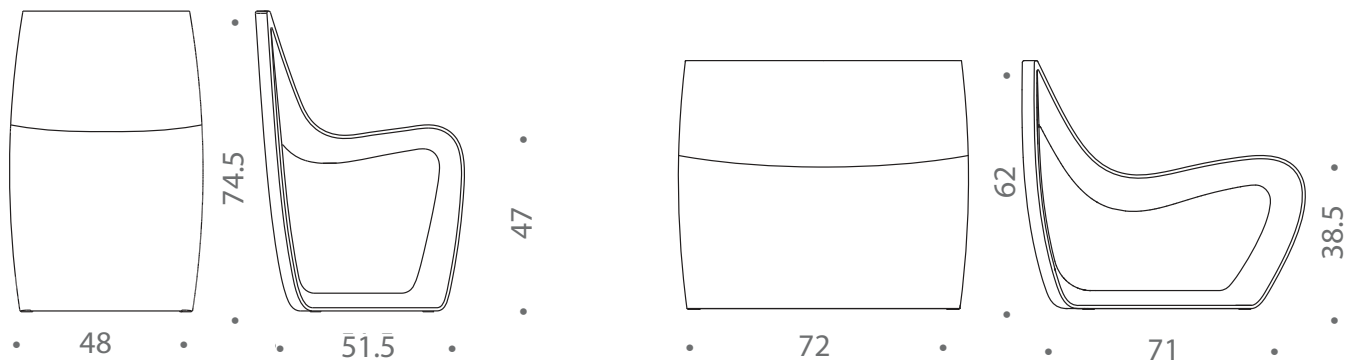
The single-material load-bearing structure is in polyethylene (PE)\*, moulded with rotational moulding technology. Available in matt variants in the colours white, mud, navy blue, cement, and corten. Only white, the purest and most delicate colour, is made with a particular mixture called EASY CLEAN. A specific additive added to the initial plastic material facilitates the cleaning and the maintenance phases.

Supplied with a removable foot, easily interchangeable to ensure perfect adaptation to every type of surface or flooring.

Outdoor use

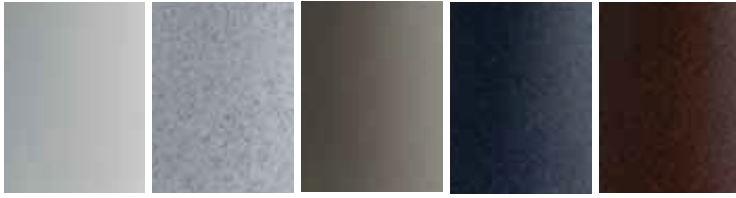
The particular resistance of polyethylene and its simple maintenance make Sign perfect both indoors and outdoors.

dimensions:



finishes:

STANDARD COLORS



S005 = white    S036 = cement    S050 = mud    S052 = navy blue    S057 = corten

EXTRA STANDARD COLORS

Wide color range availability (extra from the standard) for lot >25 pieces (per color).  
Feasibility, prices and lead times to be verified with the sales dept.



223 west erie street,  
chicago, il., 60654  
t: 312 335 1033 f: 312 335 1025  
info@orangeskin.com  
www.orangeskin.com