



mustache paolo zani

The graphic symbol of the Mustache collection is inspired by India, a civilization with centuries-old cultural, artistic and artisan traditions. Here, in the Varanasi region, these carpets are made as part of the STEP programme, which supports: respect for the rights of male and female workers and the protection of their health and safety, the prevention of illegal child labor, discrimination, forced labor and the promotion of eco-sustainable production processes. Adequate remuneration is also guaranteed in accordance with the principles of fair trade. These principles are listed on a label that accompanies each carpet. The carpets also undergo on-site checks to ensure their ethical and aesthetic value. Mustache carpets are made of high-quality polypropylene yarns, ideal for both indoor and outdoor use. The only precaution required is to use non-slip mesh if the floor is very smooth. And if it has a radiant heating system, it is necessary to check, over time, that it does not stick to the surface where it has been placed.

materials:

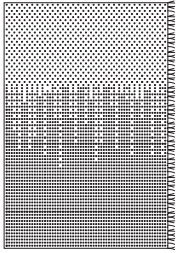
yarn: 100% polypropylene.
weaving: handwoven on a loom.
water resistant.

bottom upholstery:
black polyurethane.

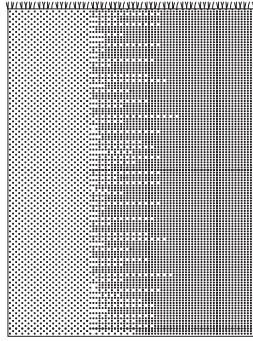
orange skin

223 west erie street,
chicago, il., 60610
t: 312 335 1033 f: 312 335 1025
info@orangeskin.com
www.orangeskin.com

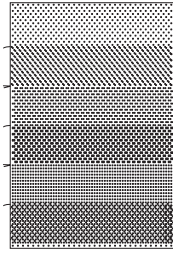
dimensions:



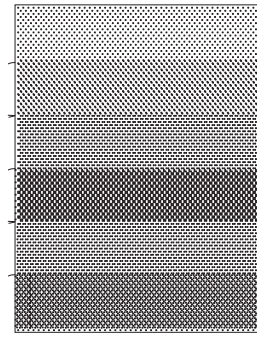
Small
200 x 300 cm
78 6/8" x 118 1/8"



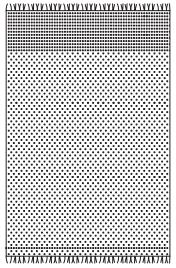
Large
300 x 400 cm
118 1/8" x 157 4/8"



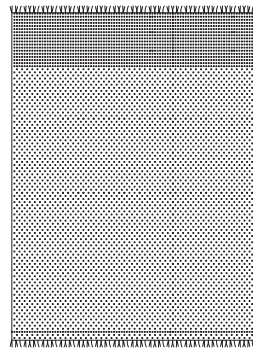
Small
200 x 300 cm
78 6/8" x 118 1/8"



Large
300 x 400 cm
118 1/8" x 157 4/8"



Small
200 x 300 cm
78 6/8" x 118 1/8"



Large
300 x 400 cm
118 1/8" x 157 4/8"