



dot monica graffe

This modular bookshelf is very unique in regards to its design and employs the principles of simplicity, versatility and innovation. The dot system is perfect for a number of practical purposes around the home and office, and this system of shelves clearly expresses the culture and designs associated with Kristalia. Thanks to the special shelf support included with this model, the shelves of the dot system can be precisely adjusted to any height that suits your preferences. These continuous shelves are placed on uprights and these are available in a number of standard sizes. Uprights are constructed from extruded anodised aluminium and can also be tailor cut to a size which you deem necessary. The shelves included with the dot system are painted sheet metal and are cut into three standard sizes, however likewise can be cut to a size which specifically meets your needs. The end panels are made from anodised aluminium also and can be fitted either flush with the uprights or in a projecting fashion depending on your preferences. These construction arrangements differentiate enormously and how you choose to have them is based completely on your furniture arrangements. This custom bookshelf is a perfect accompaniment to any office and will hold plenty of documents and business literature. Multiple units of this shelving system can be conjoined to make a larger storage space and there are more examples of its versatility too. The dot system can be partially dismantled to make space for larger items such as televisions and Hifi's. This fantastic shelving system can also be mounted onto wheels making it easy to move around the room.

materials:

finish available for upright:

anodised aluminium. white and black lacquered aluminium.

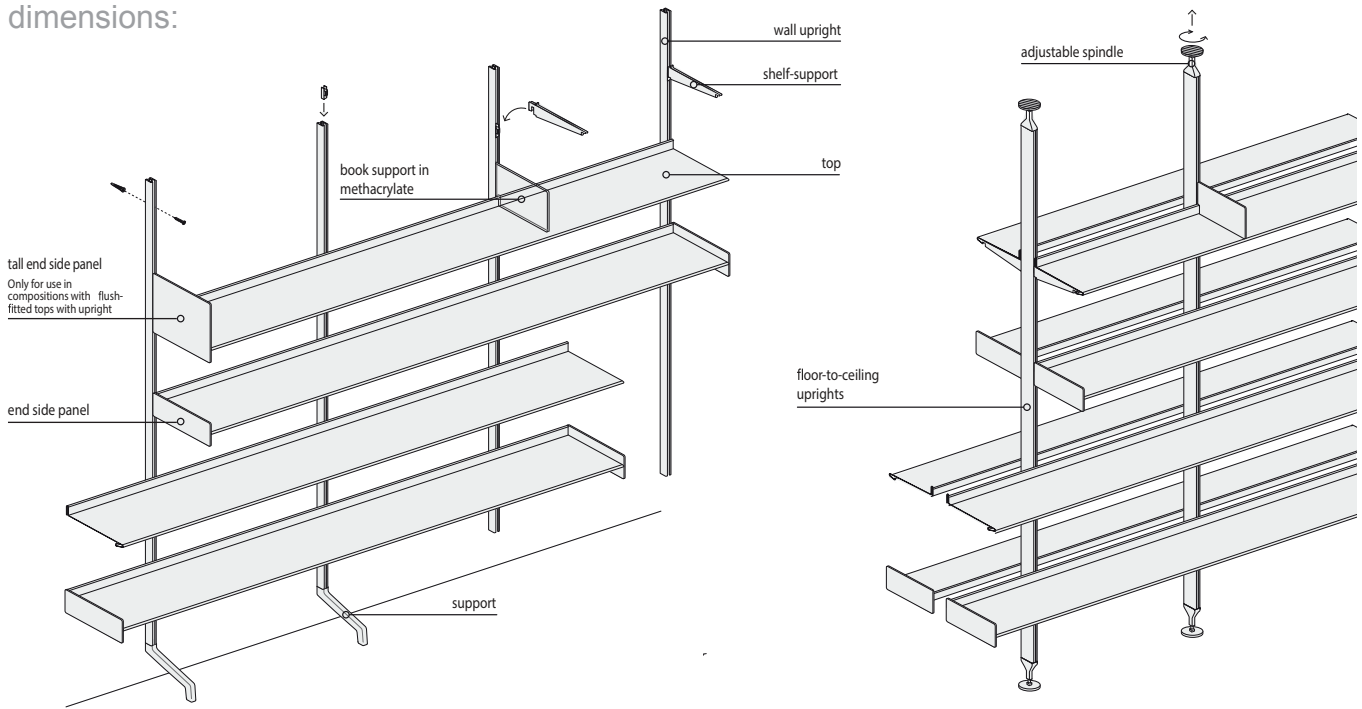
finish of top:

grey textured painted steel and/or steel with white or black lacquer.

orange skin

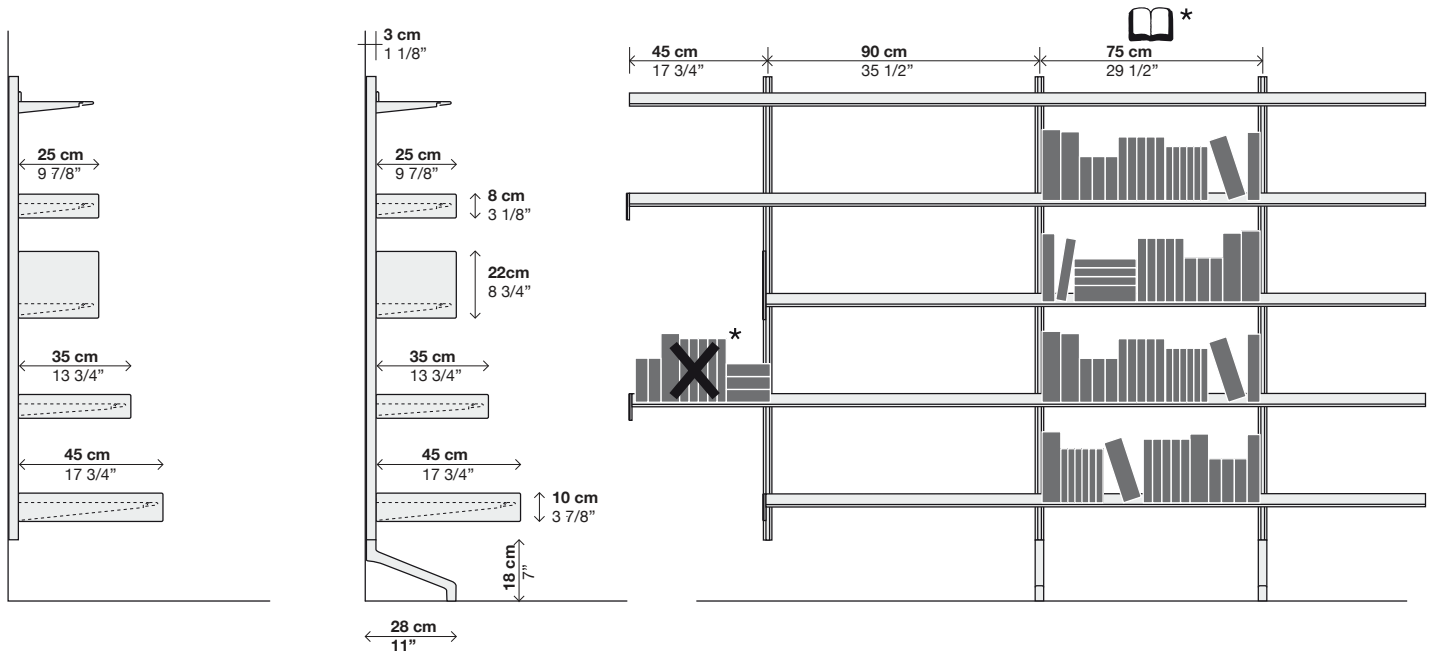
223 west erie street,
chicago, il., 60654
t: 312 335 1033 f: 312 335 1025
info@orangeskin.com
www.orangeskin.com

dimensions:

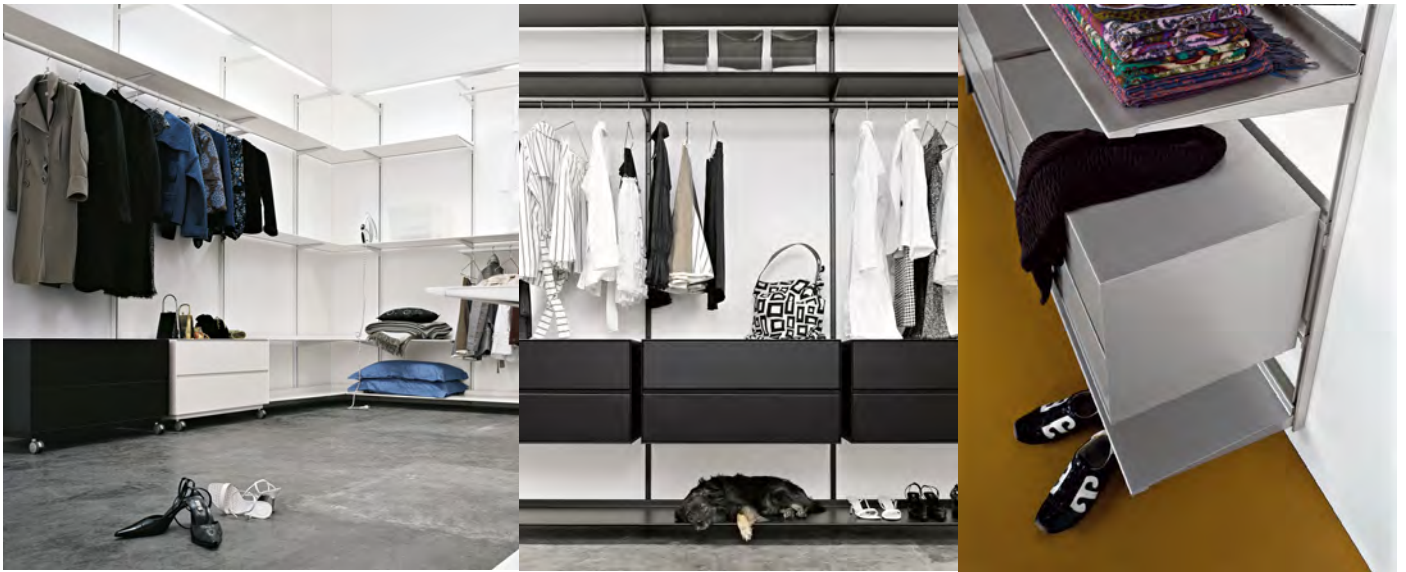


Dot system

↘ Wall-fixed bookcase. Wall-hung or floor-standing version.



223 west erie street,
 chicago, il., 60654
 t: 312 335 1033 f: 312 335 1025
 info@orangeskin.com
 www.orangeskin.com



dot wardrobe monica graffeo

The concept behind the Dot Walk in Closet Wardrobe emerged as the successor to the Dot System Bookcase. The walk in wardrobe adapted this model to create a modern closet space that was more accessible and much more catered to the needs of the user. Moving away from the constricting design of classic closets, this wardrobe allows freedom of movement. Much like a library, closet items can be categorised and placed freely where desired. Available in black, white or silver painted metal, each element of the closet, such as drawers, hanging sections or shelves, can be fitted to size, making the most of the full height and width of a room. A number of amenities can also be added to the basic frame of the wardrobe, including clothes-hanging tubes and light bars. Drawers can also be added either independently or attached to the frame itself.

materials:

finish available upright:

anodized aluminum or white or black laquered aluminum.

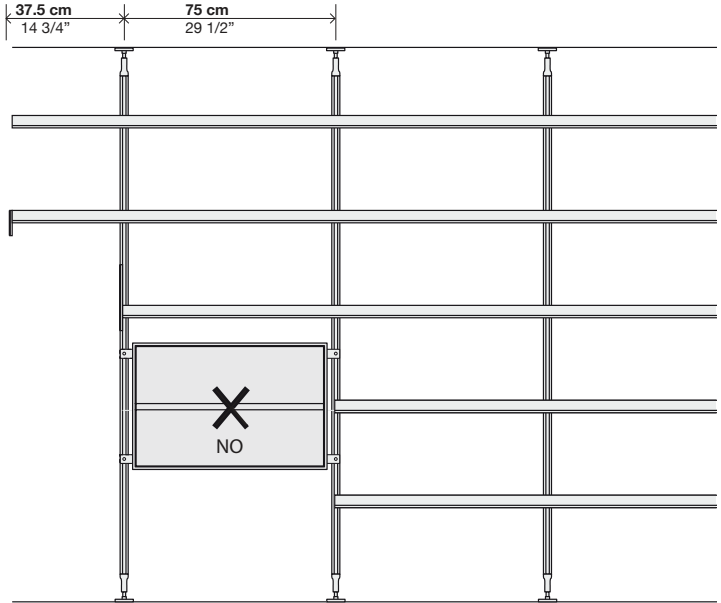
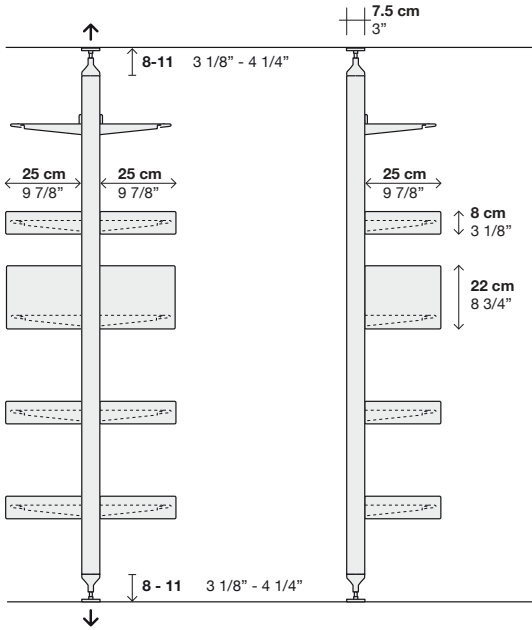
shelves and drawers in:

painted grey textured, white or black steel.

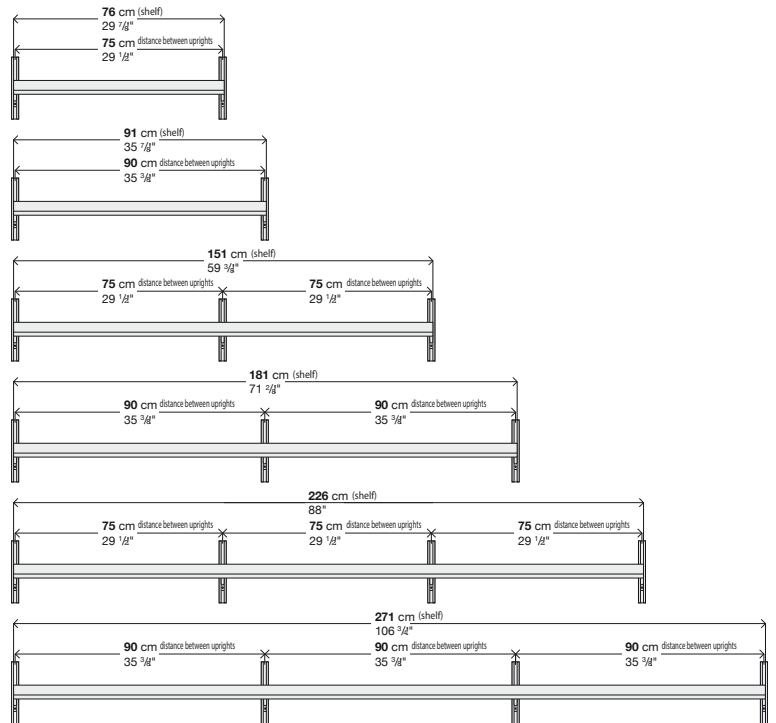
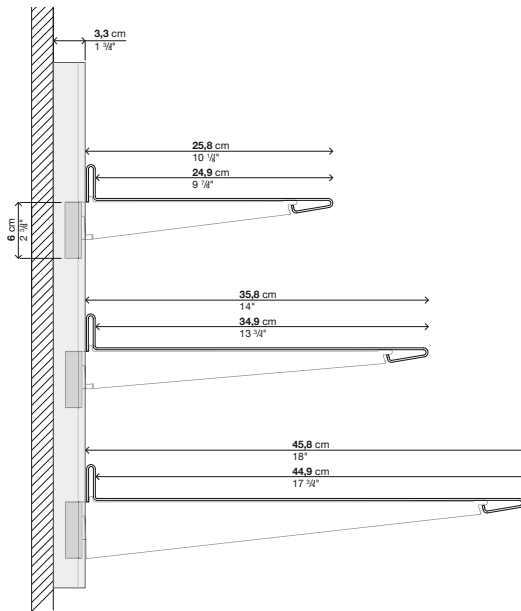
orange skin

223 west erie street,
chicago, il., 60654
t: 312 335 1033 f: 312 335 1025
info@orangeskin.com
www.orangeskin.com

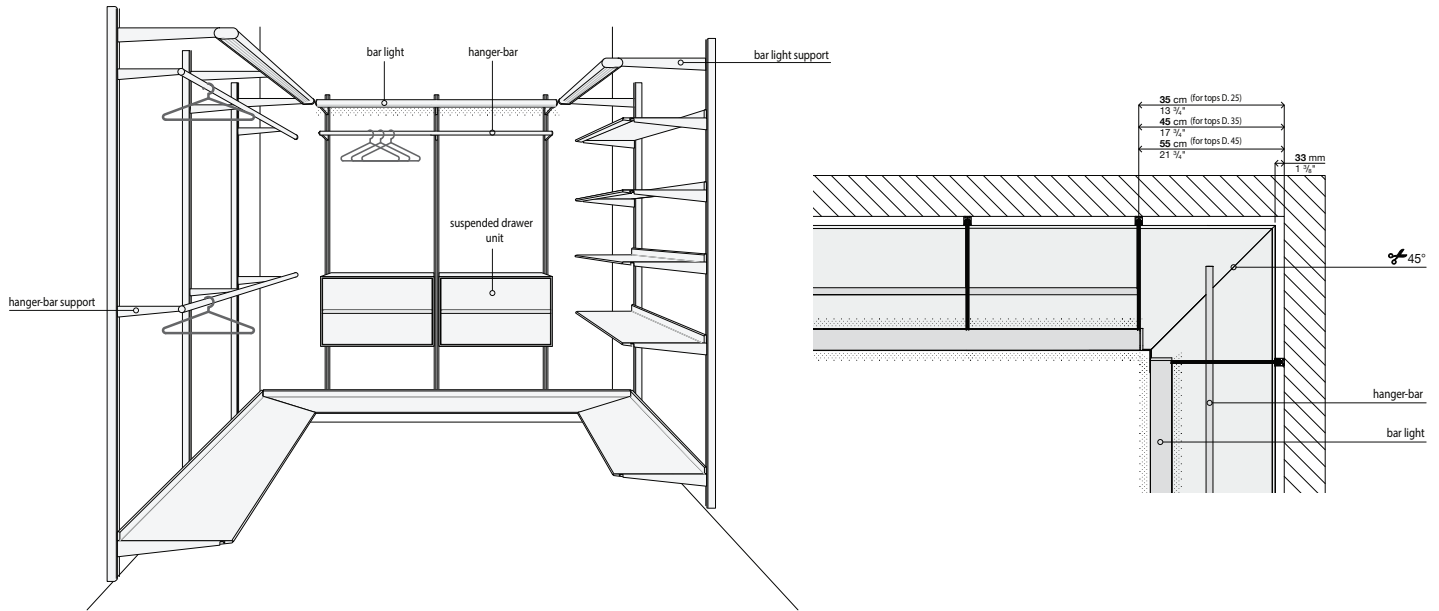
▼ Bookcase fixed to the ceiling by means of adjustable thrust devices. Double and single-faced versions are available.



▼ Real measurements

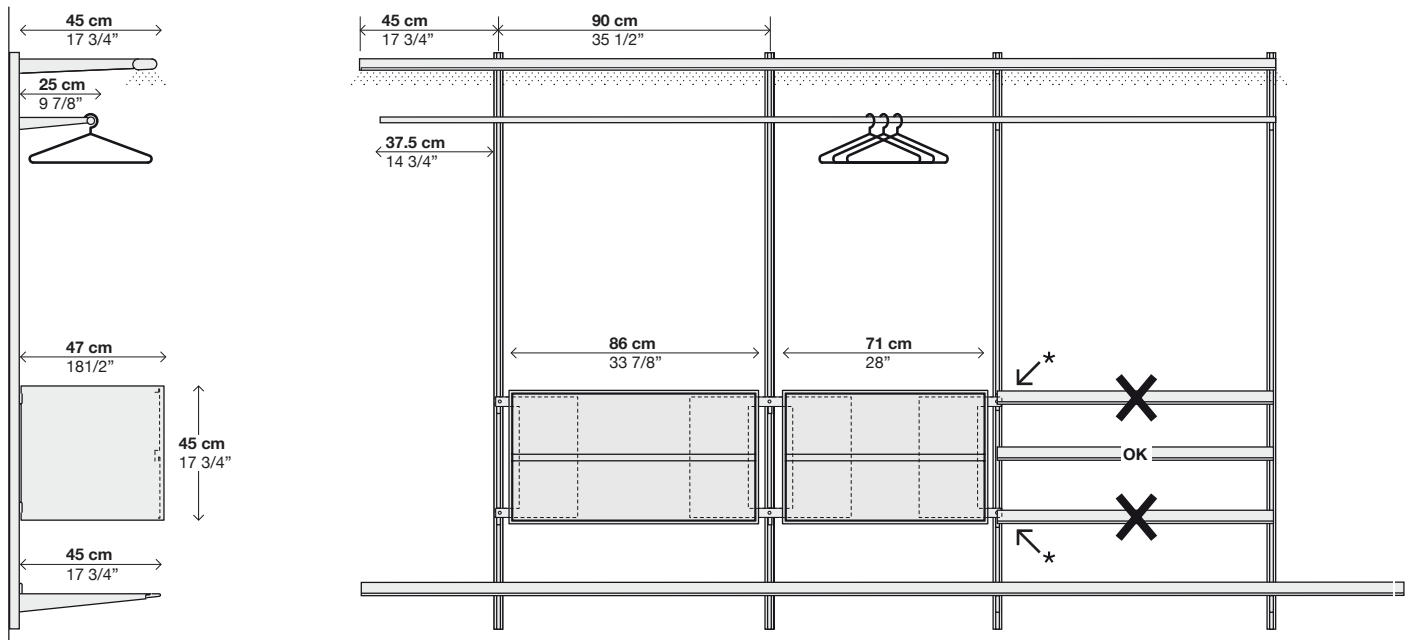


dimensions:



Dot wardrobe

Wall walk-in wardrobe with wall mounted drawer units.



223 west erie street,
 chicago, il., 60654
 t: 312 335 1033 f: 312 335 1025
 info@orangeskin.com
 www.orangeskin.com