



waan dienke dekker

Heart of yarn. Rather than fabrics, these rugs look more like a series of knots framed in a subtle square. A meditated consideration with a magical simplicity. Two contrasting threads intertwine to create stronger, thicker yarns. These cords have a markedly graphic, individual character with a strong, mesmerising visual effect.

materials:

Hand loom 100% wool. Pillow and pouf filling in 100% polyester.

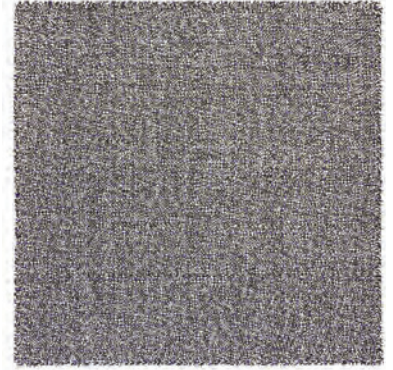
RUGS



5'7"x7'11" / 170x240 cm Light green.
6'7"x9'10" / 200x300 cm
8'3"x8'3" / 250x250 cm



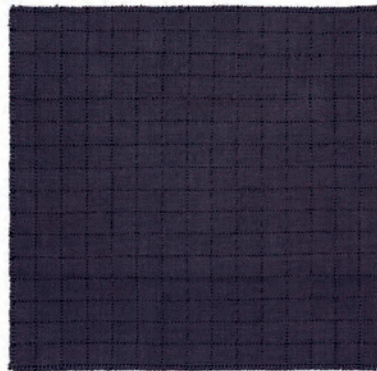
5'7"x7'11" / 170x240 cm Taupe.
6'7"x9'10" / 200x300 cm
8'3"x8'3" / 250x250 cm



5'7"x7'11" / 170x240 cm Blue.
6'7"x9'10" / 200x300 cm
8'3"x8'3" / 250x250 cm



5'7"x7'11" / 170x240 cm Black & White.
6'7"x9'10" / 200x300 cm
8'3"x8'3" / 250x250 cm



5'7"x7'11" / 170x240 cm Dark red.
6'7"x9'10" / 200x300 cm
8'3"x8'3" / 250x250 cm

PILLOWS



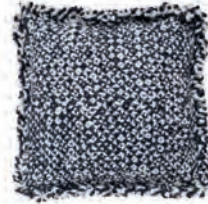
20"x20" / 50x50 cm
Light green.



20"x20" / 50x50 cm
Taupe.



20"x20" / 50x50 cm
Blue.



20"x20" / 50x50 cm
Black & White.



20"x20" / 50x50 cm
Dark red.

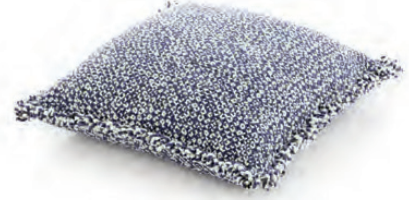
POUFS



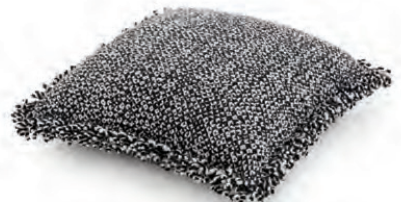
35"x35"x13"h / 90x90x33h cm Light green.



35"x35"x13"h / 90x90x33h cm Taupe.



35"x35"x13"h / 90x90x33h cm Blue.



35"x35"x13"h / 90x90x33h cm Black & White.



35"x35"x13"h / 90x90x33h cm Dark red.