



pontsun dirk wynants

With its legs inspired by the Origami paper folding technique from Japan in order to create strength, and the repetition of wooden planks, as seen in pontoons and piers, this extra wide table was baptised Pontsūn, Japanese for pontoon.

Indoors or outdoors, get together with a lot of friends around this large yet elegant table. Experience an oriental feel with the combination of robust wood and origami-like legs, perfectly combined with white Extremis Captain's Chairs

materials:

Tabletop

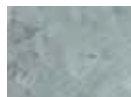


Iroko hardwood



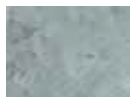
H.O.T.wood

Frame



Galvanised steel

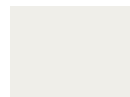
Legs



Galvanised steel



Earth

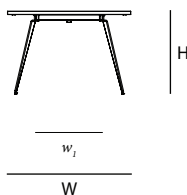
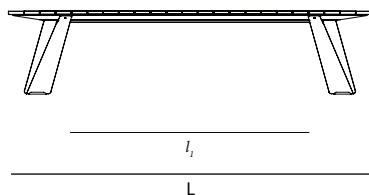


White
(ral 9003)



Black brown
(ral 8022)

dimensions:



Dimensions (in)	L	W	H	l_1	w_1
Pontsūn 255	99.8"	43.4"	29.1"	56.3"	21.3"
Pontsūn 325	127.5"	43.3"	29.1"	83.9"	21.3"
Pontsūn 395	155.3"	43.3"	29.1"	109"	21.3"