

MUSTACHE

Rugs

Mustache is a collection of carpets designed by Paolo Zani. Created to meet the needs of outdoor spaces, it has evolved into a range of versatile furnishing accessories ideal for any space. Featuring a melange weave with edge trims in different colours and fringes, the carpets are woven on handlooms: such fine craftsmanship and tailored quality makes each one of them unique. Made from a polypropylene fibre yarn, Mustache carpets are available in three designs in two or more colours and in two standard sizes, or can be customised on request. They are highly resistant, even when exposed to sunlight or humidity.

Ethical production:

The carpets are made by hand on wooden looms. Kristalia only produces in areas of the world with a tradition of quality and craftsmanship. Our carpets are made in India as part of socially responsible production programmes and are certified and do not involve the use of illegal child labour. We certify our production without the use of illegal child labour.

Maintenance:

We only use technical polypropylene yarns suitable for use in public and residential indoor and outdoor environments.

We recommend using non-slip protection if the carpet is laid on slippery floors. If non-slip protection is used in interiors on floors with integrated heating, check that it does not stick to or damage the floor over time due to the insulating effect of the carpet.

To make it easier to dry carpets from rainwater or moisture, temporarily lift them slightly off the floor (if possible).

Cleaning:

It is important to clean the carpet at least once a week, to prolong its life and colours. For routine cleaning, we recommend using a vacuum cleaner with soft brushes. For thorough cleaning, use a solution of cold water and a neutral detergent. If liquids are spilled on the carpet, if possible remove them immediately and dab with a clean cloth. Do not rub or wet the area further, otherwise the stain will spread.

Once the stain has been absorbed, wipe it off with a cloth and apply diluted neutral detergent, starting at the edges of the stain and moving towards the centre. Rinse off any excess soap and allow to air dry. In the case of resistant stains, repeat the cleaning operation until they are removed. Dry stains should be removed with a brush or scraped off with the edge of a spoon. Avoid any unnecessary and excessive washing: do not use hard brushes, abrasive tools, bleaching agents or solvents. Do not dry clean or use high-pressure washers.



Resistance to light

The resistance to light of carpets is specified in EN 1307 (T), EN ISO 105-B02



Intensive home use

Classification according to EN ISO 10874



Suitable for underfloor heating

The thermal resistance of fabrics, resilient and laminated coatings is specified in EN 14041 (R + L + T), EN 1307 (T) and ISO 8302



Suitability for use in unforeseen humid conditions

The suitability for use in unforeseen humid conditions of fabric upholstery for floors is specified in EN 1307 (T)



Electrical shock absorption - Anti-static coating

The electrical properties of fabric coatings and anti-static floor coverings is specified in EN 14041



Composition

Polypropylene



Luxury class LC2

The luxury class of fabric floor coverings is specified in EN 1307 (T), EN 14215 (T)



CE Marking (EU) REGULATION

N. 305/2011 - Council Directive no. 89/106/EEC

MUSTACHE

Rugs

Yarn: 100% polypropylene

Technique: hand-woven on a frame

Water-resistant

Internal UV colour fastness: 8/8

External UV colour fastness: 4-5/8

Colourfastness to washing: 5/5

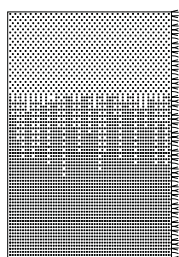
Tested: ISO 105B02 – ISO 105B04

Dimensions (fringes not included):

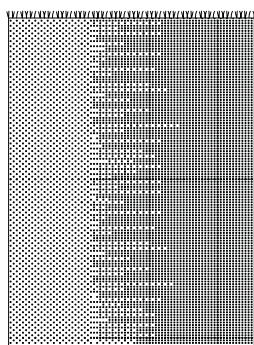
standard 200x300 – 300x400 cm

custom-sized on request

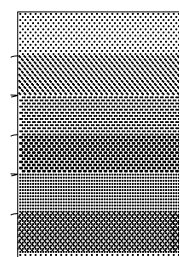
Dimensional tolerance: $\pm 3\%$



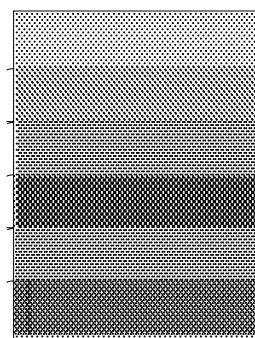
Small
200 x 300 cm
78⁵/₈" x 118¹/₈"



Large
300 x 400 cm
118¹/₈" x 157⁴/₈"



Small
200 x 300 cm
78⁵/₈" x 118¹/₈"



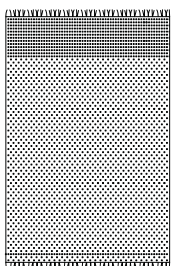
Large
300 x 400 cm
118¹/₈" x 157⁴/₈"

Mustache-GA (Thickness: 1 cm / Weight: 2,75 Kg/m²)

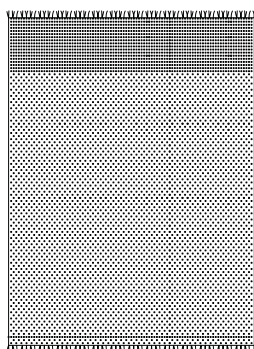
Code	Dimensions	Finish	pack	m³	Kg
		Polypropylene			
28MGA01	200 x 300 (small)		1	0,07	17
28MGA02	300 x 400 (large)		1	0,15	30

Mustache-RE (Thickness: 0,5 cm / Weight: 1,40 Kg/m²)

Code	Dimensions	Finish	pack	m³	Kg
		Polypropylene			
28MRE01	200 x 300 (small)		1	0,07	9
28MRE02	300 x 400 (large)		1	0,15	17



Small
200 x 300 cm
78⁵/₈" x 118¹/₈"



Large
300 x 400 cm
118¹/₈" x 157⁴/₈"



Mustache-SA (Thickness: 0,5 cm / Weight: 1,20 Kg/m²)

Code	Dimensions	Finish	pack	m³	Kg
		Polypropylene			
28MSA01	200 x 300 (small)		1	0,07	7,5
28MSA02	300 x 400 (large)		1	0,15	14,5

Full sample collection

Code	Dimensions	Finish	pack	m³	Kg
		Polypropylene			
02CAMMUS01	30 x 15 x 8 (H)		1	0,01	1,5