



2023

## PENTAGRAMMA

Designed by Pitsou Kedem

Pentagramma is the new living system designed by Pitsou Kedem for MDF Italia, a design with a strong personality that interprets the concept of the day system with sophistication by focusing on the value of lightness. Surprisingly simple to compose and install, the design develops from an extruded aluminium panel fixed to the wall, on which various elements, containers or shelves are hung. Its name was inspired by its construction: the wall-mounted back panel to which the accessories are hung to create the composition looks like a music stave or pentagramma in Italian, on which the notes are written to compose a tune.

Extremely flexible and versatile, this system offers the possibility of reconfiguring the layout over time. Just a few elements are enough to obtain infinite combinations that fulfil different functions and situations of use, fitting seamlessly and with versatility into all residential and contract environments: in fact, it offers a valid storage solution for walls in the living area and office, but also for creating compositions in the sleeping area.

### BACKEST

The wall-mounted panel, the load-bearing structure of the whole system, is made of 20 mm thick extruded aluminium and available in various lengths (L152, L202 and L252 cm).

The panels can be fixed to the wall using the aluminium bar provided, onto which the hidden panel brackets are hung. It can all be adjusted in three directions: horizontally, vertically and also frontally (sloping away from the wall).

The panels are completely covered in veneered wood, available in two finishes: bleached oak and Canaletto walnut. Horizontal wood grain. The panels can be placed side by side horizontally. Whereas vertically there must always be a 5-cm gap between one panel and another to allow for attachment of the shelf or open unit modules.

## SHELVES

The shelves are made from a single piece of 8 mm thick extruded aluminium. A really simple intuitive system uses the cross-section of the shelves themselves to hang them on the wall-mounted panels so that the various modules can be arranged and positioned as required.

An anchoring system is provided for safety. The various modules are available in a liquid paint finish in matt colours: white, lead black and shadow grey. The shelves are available in only one height but in various lengths (L60, L90 and 1L20 cm).

The system is rounded out by a divider (left or right), designed to add movement to possible configurations.

## OPEN STORAGE UNITS

The open units are available in only one height but in various lengths (L30, L60 and L90 cm).

The L90 modules have an internal divider (right or left) that separate the space creating a partition, like the musical notes on a stave. The materials used are extruded aluminium for the back of the units, while the rest of the structure is made of panels in medium density wood fibre, laminated with aluminium to increase the resistance and sturdiness of the unit.

All the open units are liquid painted in matt colours: white, lead black, shadow grey, burgundy red, English green, dune and blue to match the rest of the MDF Italia collection.

## LED LIGHTING

The LED system can be ordered as an accessory to fit to the lower part of the wall-mounted panels. Each panel can be fitted with the LED bars and will be provided with its own junction box and power supply unit. Colour temperature 2700° K. Can be switched on/off using a remote control or dedicated app.

## ACCESSORIES

- . Remote control for LED complete composition.
- . External finishing caps (pair). Three colors: lead gray, shadow gray, white.

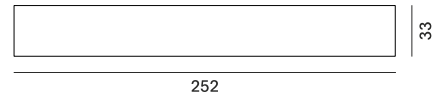
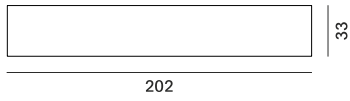
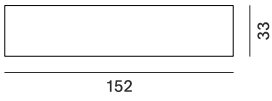
---

**Abacus**

---

back panel, wall-mounted panel

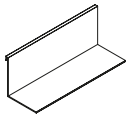
---



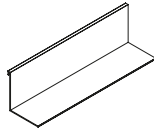
---

**shelves**

L60 D33 H34

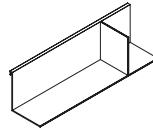


L90 D33 H34

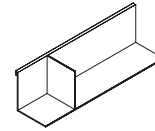


L120 D33 H34

---

**shelves with right R or left L divider**

R - L120 D33 H34



L - L120 D33 H34

---

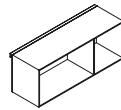
**open unit**

L30 D33 H34

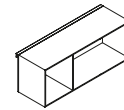


L60 D33 H34

---

**open unit with right R or left L divider**

R - L90 D33 H34



L - L90 D33 H34

# Finishing

The number in the dot corresponds to the number of colour/material finish.

Here below, in the section FINISH OPTIONS, please note all the colours of the materials used for this product.

## SYSTEM

---

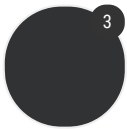
### Structure



Wood

---

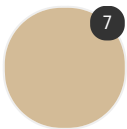
### Shelves



Matt painted

---

### Open compartment



Matt painted

# Finish options

## STRUCTURE

---

### Wood



Canaletto  
walnut



Bleached oak  
X075

## SHELVES

---

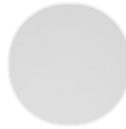
### Matt painted



painted matt  
lead black  
X138



matt painted  
shadow grey  
X122

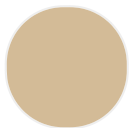


matt painted  
white X053

## OPEN COMPARTMENT

---

### Matt painted



painted matt  
dune



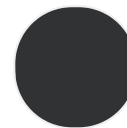
painted matt  
burgundy



painted matt  
navy blue



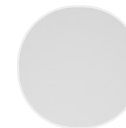
painted matt  
English green



painted matt  
lead black  
X138



matt painted  
shadow grey  
X122



matt painted  
white X053