



© COPYRIGHT 2021 MDF ITALIA SRL SOCIETA' UNIPERSONALE

2013

## LIM 3.0

Designed by Bruno Fattorini

Lim 3.0 by Metrica design Bruno Fattorini.

Lim 3.0, a makeover of the LIM iconic family, renews and turns into a light and thin table, with a more up-to-date and modern identity. The structure contained in the sections can receive different colours to offer an alternative option to monochromatism and single material structure. The frame and the built-in top flush with the new and sophisticated surfaces (today used in architecture only) generate with LIM 3.0 a multi-purpose and chameleon collection which enhances all its features. Tops are built-into the frame and are available in white, black lacquered tempered glass; in matt ceramic Corten; light grey or black calce, medium grey Pietra di Savoia; Fenix in the matt variant in the following colours: white, black, medium grey and turtledove. Frame in matt lacquered version in white or graphite grey.

Only upon request, the tables are also available in the version equipped with 1 or 2 top-access and under top cable tray.

## STRUCTURE

A table composed of top, legs and a perimeter frame in extruded aluminium, available in epoxy powder matt painted version in white and graphite grey shades. Legs in extruded aluminium, section 35x35 mm, with a standard central steel support bar. Perimeter frame in extruded aluminium, height 35 mm.

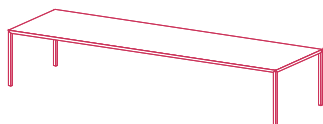
## TOPS

Tops are built-into the frame and need no fittings. The tabletop is a composite panel made of central support in aluminium sections with resin-coated honeycomb filling and two layers, still in aluminium; such a technological innovation allows the top to reach important sizes, maintaining a perfect flatness and a considerable lightness.

## TOP-ACCESS (UPON REQUEST)

The tables are also available in the version equipped with 1 or 2 top-access and under top cable tray. The metal cable trays are telescopic (H7/10 cm), to host various wiring systems, such multi-scket boxes, etc. wiring systems and electrical parts are not included. The steel cable spring (optional) can be inserted in the cable holes of the cable tray to lead the cables to the floor. The top-access is made of aluminium (size 127x350 mm) in three versions: single lead with soft closing and double lead. Finishes of the top-access: white and black painted, match with the colour of the frame of the table.

## LIM 3.0



standard version

H72 and 75 cm

D80 L120, 140, 160

D90 L180, 200, 220, 240

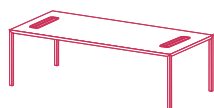
D100 L100, 200, 220, 240, 260, 280, 300

D120 L120, 300

D140 L140

D150 L150

## LIM 3.0 - TOP-ACCESS VERSION (only upon request)

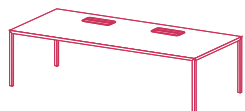


with one or two lateral openings for  
cable management in size 35 cm

H72 and 75 cm

D90 L180, 200, 220, 240

D100 L200, 220, 240, 260

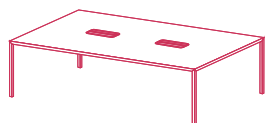


with two front openings for  
cable management in size 42 cm

H72 and 75 cm

D100 L200, 220, 240, 260, 280, 300

D120 L300



with two central openings for  
cable management in size 42 cm

H72 and 75 cm

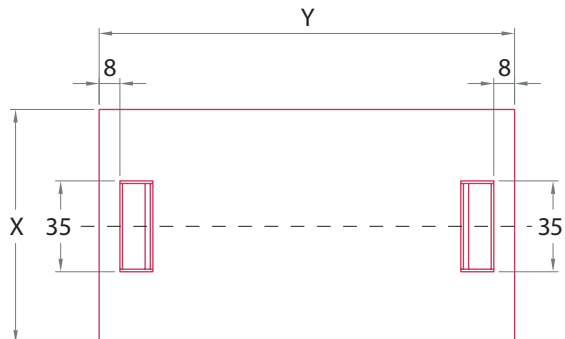
D100 L200, 220, 240, 260, 280, 300

D120 L300

CABLE MANAGEMENT DOOR POSITION

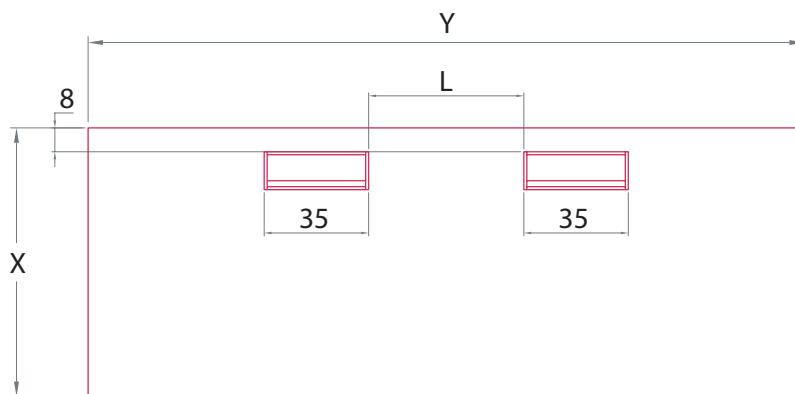
With one or two lateral top-access

X (cm)	Y (cm)
90	180
90	200
90	220
90	240
100	200
100	220
100	240
100	260



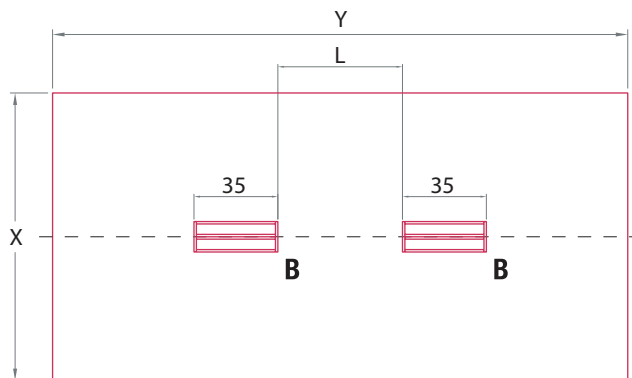
With two front top-access

X (cm)	Y (cm)	L (cm)
100	200	50
100	220	50
100	240	50
100	260	70
100	280	70
100	300	70
120	300	70



With two central top-access

X (cm)	Y (cm)	L (cm)
100	200	50
100	220	50
100	240	50
100	260	70
100	280	70
100	300	70
120	300	70

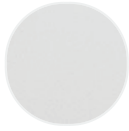


# Finish options

## TOP

---

### Glass



Lacquered  
glass white  
X011

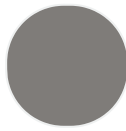


Lacquered  
glass black  
X012

### Fenix



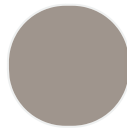
Fenix matt  
white X020



Fenix matt  
medium grey  
X021



Fenix matt  
black X022



Fenix matt  
turtledove  
X023

### Ceramic



Ceramic matt  
corten X010



Light grey  
calce



Black calce



Medium grey  
pietra di  
Savoia

## STRUCTURE

---

### Matt painted



Matt painted  
white X053



Matt painted  
graphite grey  
X054